



## Sebergham Grove

**£750,000**

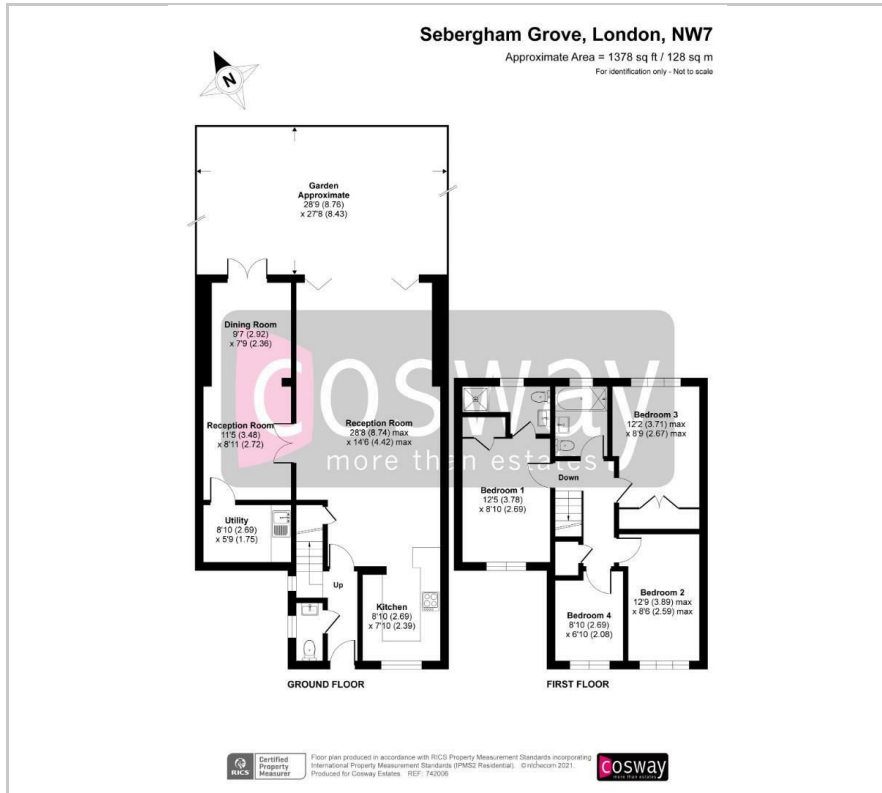
Cosway are pleased to offer for sale this extended, well presented four bedroom end of terrace house with two bathrooms (one en suite), situated just off Page Street on the sought after Laing development just one mile from Mill Hill Broadway shops and Thameslink station. On the ground floor the property comprises of a w/c, fully equipped kitchen, open plan living-dining room, which leads onto a well maintained rear garden and a further family room. On the first floor the property boasts a master bedroom with an en-suite, three further bedrooms and a family bathroom. Viewing Highly Recommended. Sole Agent

### Viewing

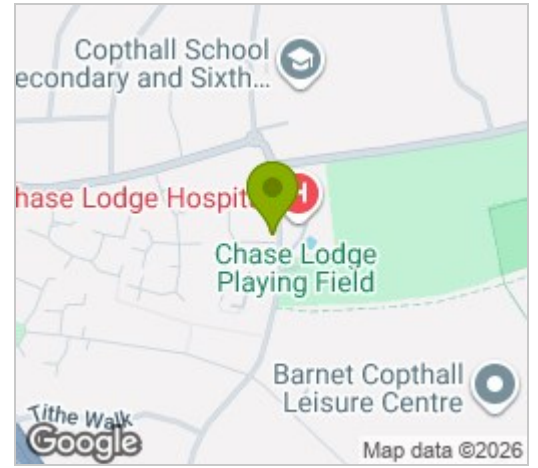
Please contact our Mill Hill Office on 02089590011 if you wish to arrange a viewing appointment for this property or require further information.



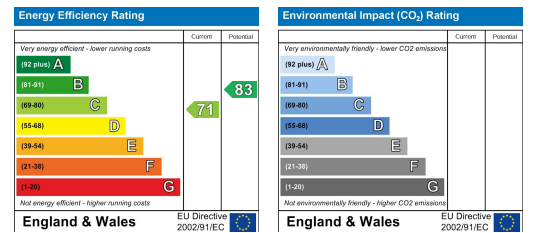
# Floor Plan



# Area Map



# Energy Efficiency Graph



These particulars, whilst believed to be accurate are set out as a general outline only for guidance and do not constitute any part of an offer or contract. Intending purchasers should not rely on them as statements of representation of fact, but must satisfy themselves by inspection or otherwise as to their accuracy. No person in this firm's employment has the authority to make or give any representation or warranty in respect of the property.